

600S/660SJ

TELESCOPIC BOOM LIFTS



- Rugged all-terrain telescopic boom lifts
- Powerful 4 wheel drive & oscillating axle
- Ultra-tight turning radius
- Excellent working range and 1.8 m jib for maximum versatility
- Simple to operate and easy to maintain

 **snorkel**
www.snorkellifts.com

TELESCOPIC BOOM LIFTS

600S/660SJ

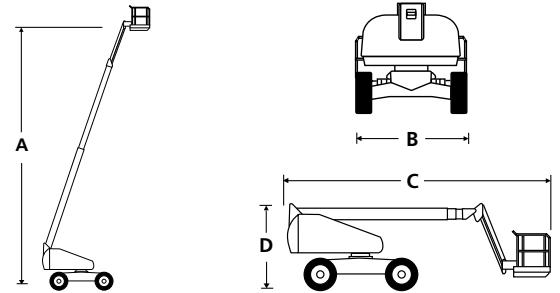
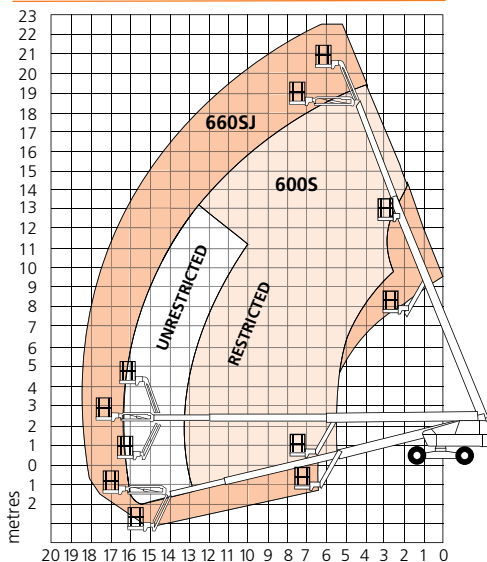
DIMENSIONS	600S	660SJ
Max. working height	20.3m	22.1m
Max. platform height (A)	18.3m	20.1m
Max. working outreach	16.0m	18.0m
Platform size	2.44m x 0.91m	2.44m x 0.91m
Transport width	2.24m	2.24m
Overall width (B)	2.46m	2.46m
Transport length	9.2m	8.5m
Overall length (C)	9.2m	10.5m
Transport height	2.52m	3.07m
Stowed height (D)	2.52m	2.52m
Ground clearance	343mm	343mm

PERFORMANCE		
Platform capacity (SWL) unrestricted	272kg	272kg
Platform capacity (SWL) restricted	454kg	n/a
Max. drive height	18.4m	20.3m
Max. wind speed	12.5m/s	12.5m/s
Max. drive speed (stowed)	5.6km/h	5.6km/h
Max. drive speed (elevated)	0.96km/h	0.96km/h
Jib length	n/a	2.0m
Jib arc	n/a	135° (+70°/-65°)
Platform rotation	150°	150°
Turret rotation (continuous)	360°	360°
Raise/lower time	50/50 sec	50/50 sec
Tailswing	1.2m	1.2m
Gradeability	45%	45%
Inside turning radius	3.06m	3.06m
Outside turning radius	5.21m	5.21m
Tires	355/55 D625 foam filled lug	
Controls	Proportional drive, raise, slew, extend, jib & platform rotate	
Drive system	4 wheel drive	

POWER		
Power source	Deutz 2.9L 55kW/74hp - Stage V	
Auxiliary power unit	12V DC	12V DC

WEIGHT		
Weight	11,430kg	12,303kg

WORKING ENVELOPE



STANDARD FEATURES

- Snorkel Guard™ secondary guarding system
- 2.0m 135° jib (660SJ)
- Oscillating axle (203mm of oscillation)
- Hydraulic platform rotation
- Four wheel drive
- All proportional controls
- Swing-out engine tray
- Horn
- Motion alarm
- Power line to platform
- Tilt alarm & cut-out
- DC emergency operation
- Hydraulic oil cooler
- Tri-entry platform
- Flashing amber light
- Hour meter & onboard diagnostic display
- 2 year parts & labour, 5 year structural warranty
- CE approved

OPTIONS

- Special paint colours
- Airline to platform
- Non-marking tyres
- Dual fuel
- AC generator 110V/220V 2kW
- Aircraft package
- Deluxe aircraft package
- Cold weather package
- Extreme cold weather package
- Extreme environment package
- Light package
- Tow kit
- Glazier package
- 10kW generator package
- 10kW generator/welder package
- Environmental hydraulic oil

snorkel

Vigo Centre, Birtley Road,
Washington, Tyne & Wear,
NE38 9DA, U.K.

t: +44 (0) 845 1550 057

e: sales.emea@snorkellifts.com

www.snorkellifts.com